

The Steeple

St. Luke's Episcopal Church

210 SE Ninth St., Bartlesville, Oklahoma 74003

www.episcopalbartlesville.org



Volume XXI, Number 6

February 8, 2017

St. Luke's Episcopal Church Treasure Sale – 5th Edition

Friday, February 17th 5:00 – 8:00 p.m.

Metcalf Hall – 8th & Dewey, Bartlesville, OK

Ticket price includes hors d'oeuvres & wine

\$12.00 advance \$15.00 at the door



The best ticket in town is now on sale!

Advance tickets through Wednesday, February 15.

Call or come by Church Office to reserve/buy yours!

Sale continues on

Saturday, Feb. 18 10:00am-2:00pm

No Admission Charge



5th Edition Treasure Sale – how YOU can help!

Many of you have already given treasures for this sale! Thank you! The time for donating treasures is over! Now it is time for donating time, interest, excitement. Here are ways you can help make our 5th Edition Treasure Sale a success.

1. Tell lots and lots and still more people about this once-every-two-years event. You, yes YOU, are the best means of advertising we have!
2. Pick up a flyer in the church office and place it where lots of people will see it.
3. Send news about our Treasure Sale to your on-line friends and encourage them to forward to their friends. See how many “shares” it takes to get back to you! Kind of like a high-tech game of gossip!
4. Get your ticket for the fun Friday evening event. Better yet, buy several tickets and bring friends! It's lots of fun to see such a wonderful display of other people's treasures and then to watch as those treasures are purchased to begin new “life” in their new homes, maybe YOUR home!
5. Remember: the 5th Edition Treasure Sale is a St. Luke's PARISH event. It takes ALL of us working together to make this Outreach Project succeed.

INSIDE THIS ISSUE...

Weekly Calendar	2
Thoughts from Fr. Sean	2
Adult Discipleship Forum	2
Steve's Stuff	3
Treasure Sale Information	3
A Prayer from the Search Committee	3
“Souper” Bowl a Big Success!	3
Oklahoma Cursillo	3
Prayer List	3
Lay Ministry Schedules	4



Important Dates To Remember

Monthly Vestry Mtg., Mon., Feb. 13,
7:15pm

Treasure Sale, Fri. & Sat., Feb. 17 & 18
(see article this pg.)

Shrove Tuesday Pancake Supper,
Tuesday, Feb. 28, 5:30-7:00pm, RH

Crafting Our Prayers group will begin meeting again on Thursday, March 2 at 10am in the Vestry Rm. If you have any questions, please contact Lauri Watkins at lauri-watkins@sbcglobal.net.

Thoughts from Fr. Sean



The learning continues. I want to thank you all for the extra grace you showed during our annual meeting last Sunday. I walked away from the day thinking, "What a great gathering." I am especially thankful to our wardens and various committees for their reports and speeches; we have a talented bunch

here at St. Luke's! I would also like to point out that Hugh Harrison did a marvelous job setting up, cleaning and tearing down throughout the whole process—way to go, Hugh! Finally, a well-deserved HUZDAH to Ann Bell for her work in organizing the Annual Report and all the other important tasks she took on during this whole process.

Next up, we have a couple of weeks to think about the approaching Lenten season. In the past, we've had book studies and classes on spirituality—both good and faithful approaches to Lent. This year, I would like to try something a little different and I hope you'll join me for Tuesday night "Soup Sessions". During Lent, we're going to have a six-week series devoted to exploring our faith as a denomination and as a religion, and we might have a look at the way other faith-walks experience Lent. We often do book studies but I thought it might be fun and informing to come together and revisit (for some) why we have Lent, in the first place.

The Soup Sessions will start on Tuesday, March 7th and continue on through April 4th, from 6:30pm until 8:00pm in Metcalf Hall. We'll have half an hour to eat and fellowship, followed by a 30-45 discussion and end with Compline. I hope you'll join us!

And don't forget, Shrove Tuesday is coming up, quickly! The Young Disciples will be cooking up a fun night for us in Rodgers Hall. I look forward to sharing food and fellowship with you all Tuesday, Feb. 28 at a time to be named, soon.

Until then, walk in love knowing that we are headed into a busy season of faith, fun and fellowship.

Faithfully yours,
Fr. Sean+

Weekly Activity Calendar

Sunday, February 12, 2017

8:00am Rite I
9:15am Sunday School Classes
10:30am Rite II

Monday, February 13, 2017

9:30am Church Staff Mtg.
5:30pm Holy Eucharist
7:15pm Vestry Mtg.

Tuesday, February 14, 2017

10:00am Spiritual Discipline Group,
library

Wednesday, February 15, 2017

6-8pm Young Disciples, RH
7:00pm Choir

Thursday, February 16, 2017

6:45am Men's Fellowship, MH
12:00pm Holy Eucharist

Friday, February 17, 2017

5:00-7:00pm Treasure Sale
Pre-View Party, MH

Saturday, February 18, 2017

10:00am-2:00pm Treasure Sale, MH

Sunday, February 19, 2017

8:00am Rite I
9:15am Sunday School Classes
10:30am Rite II

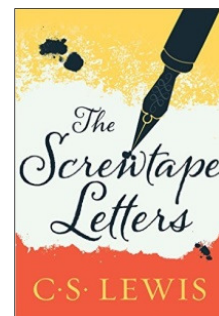
Monday, February 20, 2017

9:30am Church Staff Mtg.
5:30pm Holy Eucharist

ADULT DISCIPLESHIP FORUM

Sunday Mornings at 9:15
in Metcalf Hall

We are currently studying "*The Screwtape Letters*" by C.S. Lewis. You are welcome to join us for study, discussion and reflection on Sunday mornings in Metcalf Hall. This week,



Feb. 12, we will be reviewing Letters 2 – 4. Fr. Sean Ekberg leads the discussion.

ST. LUKE'S PRAYER LIST

Please keep them in your prayers

Names on the Prayer List are rotated off every 4 weeks. If there is need for continued prayers, please let us know.)

Becky, Rose, Ann, Cory, Jack, Pam, Diana, Walter, Carmen, Paul, Marty, Jim, Mary Lou, Peggy, Lynette, , Jenny, Joseph, Patty, David, Kristen, Elizabeth, Mary, Jeanne, Max, Emma, Helen, and all members of our armed forces and their families.

If you have a prayer request, contact our Prayer Ministry Coordinator Thelma Blackburn 918-333-7902 or TPBGEN@aol.com or the church office at 918-336-1212 or annbell@episcopalbartlesville.org.

PRAYER FOR THE NEW RECTOR SEARCH PROCESS

Please continue to pray for our Search Committee and Vestry during their discernment process for St. Luke's next Rector.

Almighty God, giver of every good gift: Look graciously on your Church, and so guide the minds of those who shall choose a rector for this parish, that we may receive a faithful pastor, who will care for your people and equip us for our ministries. Through Jesus Christ our Lord. Amen.

Thank you to everyone for their support of the Young Disciples "Souper" Bowl campaign! Through everyone's support we were able to donate \$972, plus 532 food items, to the CONCERN Food Pantry. This was one of our most successful Souper Bowl campaigns to date. Thank you so much for your generosity!

Oklahoma Cursillo

The term "Cursillo" (coor-see'-oh) is a Spanish word meaning "a short course." Cursillo is intended to help Christians know God's love and grace, and to help them discover and live out their personal vocations in the world.

Cursillo is a movement in the Episcopal Church designed to help participants better understand their individual callings to be Christian Leaders. In Cursillo, "leadership" does not mean power over others; but, rather, the influence you can have on others. Cursillo encourages participants to increase their awareness of their ability to serve as a positive influence in the lives of those around them. This type of Christian Leadership can be utilized in all aspects of one's life: church, family life, professional situations, leisure and social activities, etc.

Cursillo is open to any Episcopalian who is a Communicant in Good Standing and is 21 years of age or older, and provides:

- An opportunity to grow in faith and in spirituality
- A deeper understanding of the teachings of Jesus, and how we can serve Him
- An experience of living and sharing with others in a loving and caring Christian community, and realizing that this can be extended into our own environment
- A continuing community that gives support and encouragement to help Christians carry out their Baptismal Vows

The goal of Cursillo is the goal of the Church: to bring all to Christ. Cursillo specifically focuses on helping participants become well-informed, well-trained leaders with the support of others sharing this commitment to help reach this goal. Cursillo helps to renew and deepen Christian commitment by providing an important learning experience helping many to feel like newly made Christians with renewed purpose and support.

The movement offers small group meetings, which help us in our life of Christian Ministry; and includes a three-day weekend, during which participants listen to sessions led by both clergy and lay persons, and participate in worship, music, fellowship, prayer and other activities. If you have any questions or would like to attend, please contact Fr. Sean Ekberg or Becky & Jim Liehr, 918-327-3126. The next weekend is March 31 – April 2 at St. Crispin's Conference Center.



Thanks to some thoughtful parishioners we have discovered that there is no really hot water in Rogers Hall! The plumber is coming on Monday, February 13 to see if we have a water heater problem, or what! In the meantime, do not use the dishwasher in Rogers Hall because the water does not get hot enough! No use trying to wash things by hand either. Be patient gentle people!

I promise the North doors are going to change for the better soon. Had a little problem ordering a handicap friendly threshold, which dictated how much to cut off of the new doors, which need to be installed before the door openers, which will then be adjusted for the weight of the door. It isn't as easy as you might imagine, but it is fun because progress is being made! When all the sawdust and so forth settles, we will have "Cadillac" North doors!

Steve Forsythe, Parish Administrator
918-336-1212, sforsythe@episcopalbartlesville.org

St. Luke's Episcopal Church
210 East 9th Street
Bartlesville, Oklahoma 74003
(Return Service Requested)
<http://www.episcopalbartlesville.org/>

The Rev. Sean Ekberg, Priest in Charge (seanekberg@gmail.com)
The Rev. Douglas Freebern, Deacon (dfreebern@yahoo.com)
The Rev. Lauri Watkins, Deacon (lwatkins@episcopalbartlesville.org)
The Rev. Mike Watkins, Deacon (mike_watkins@sbcglobal.net)
In an Emergency, call 580-977-4969, 918-766-2473, 918-336-1430 or 918-914-0525
Ann Bell, Parish Secretary (annbell@episcopalbartlesville.org)
Steve Forsythe, Parish Administrator (sforsythe@episcopalbartlesville.org)
Dolores McCreary, Organist/Choir Director (dolores@episcopalbartlesville.org)
Erin Perry, Christian Educ. Dir. (erinperry@episcopalbartlesville.org)
Kathy Zervas, Sr. Warden (kzerv@aol.com)
Amy Borg, Jr. Warden (amy.a.borg@p66.com)
Office Phone: 918-336-1212 Office Fax: 918-336-2557
Office Hours: Monday-Thursday, 8:30am-4:00pm, Fridays 8:30am-3:00pm
Holy Eucharist: Sunday 8am & 10:30am; Monday 5:30pm, Thursday 12pm

"The Steeple" is a weekly publication of St. Luke's Episcopal Church, 210 SE 9th St., Bartlesville, OK 74003

LAY MINISTRY SCHEDULE 2/12/17 through 2/19/17

Volunteers: Please make your own substitutions.

Acolytes
Sunday, Feb. 12
Servers
Ruth Todd, Grace Mitchel
Torchbearers
Keaton Mitchell, Evan Mitchell
Sunday, Feb. 19
Servers
Nick Olsen, Greta Olsen
Torchbearers
Kyle Peterson, Charlie Olsen

Layreaders
Sunday, Feb 12
8:00am
Darian Kedy, Nick Conner
10:30am
Kate Carroll, Judy Currey,
Bob Wesneski
Sunday, Feb. 19
8:00am
Jeff Birk, Jim Grillot
10:30am
Nick Conner, Juanita Green
Lauren Green, Judy Currey

Nursery Volunteers
Feb. 12
Natalie Conner
Feb. 19
Barbara Todd
Feb. 26
Diana Crawford

Scripture Lessons for
Sunday, Feb. 12
Deuteronomy 30:15-20; Psalm
119:1-8; 1 Corinthians 3:1-9;
Matthew 5:21-37
Music for Sunday, Feb. 12
#10 – "New Every Morning is the
Love"
#655 – "O Jesus, I Have
Promised"
#318 – "Here, O My Lord, I See
Thee Face to Face"
#470 – "There's a Wideness in
God's Mercy"
#493 – "O For a Thousand
Tongues to Sing"

Coffee Fellowship Hour
Feb. 12, 19 & 26
Volunteers needed!
To volunteer, contact Rita
Childers, 918-519-8470 or
puvey45@gmail.com

Sunday Plate Counter
Feb. 12
Bruce Ramzel
Feb. 19
Steve Clark
Feb. 26
Jim Grillot, Jim Malone

Greeters
Sunday, Feb. 12
8:00am
Don Doty
10:30am
Debbie & Dennis
Mueggenborg
Sunday, Feb. 19
8:00am
Monica Martin
10:30am
Carol Murphy
Maureen & Steve Forsythe

St. Luke's Bookstore
*The Bookstore is open
Sundays between the two
services and after the
10:30 service. All proceeds
from sales go to St. Luke's
Outreach Projects.*
***To volunteer,** contact
Melinda Wesneski,
918-333-7758 or
mcwesne@gmail.com.

NEWSLETTER DEADLINE
Please have articles that you
would like printed in
The Steeple to the church
office no later than *Tuesdays*
at 10am.
Thank you!

Ushers
Sunday, Feb. 12
8:00am
Don Davidson
10:30am
Brian Ferguson, Hugh Harrison
Sunday, Feb. 19
8:00am
Dean Zervas
10:30am
Glenn Bonner, Jim Warring

Children's Chapel
Feb. 12
Jeanne Julstrom, Travis Sutton
Feb. 19
Blair & Chad Ellis
Feb. 26
Erin & Travis Perry

Agape Mission
2nd Thursday, Feb. 9
9-11am
Jeanne Julstrom, John McCollum
10:45am-1pm
Kris Bonner, Rita Childers,
Becky Liehr, Kathy Zervas,
Marcia Zervas
1:00-2:45pm
Melinda Droege, Miriam Petrovich

Bereavement Committee
Team 3
Wendy Hall, Connie Freebern,
Glenda Garrison, Gretchen Hoyt,
Becky Liehr, Carol Murphy