

The Steeple

St. Luke's Episcopal Church
210 SE Ninth St., Bartlesville, Oklahoma 74003
www.episcopalbartlesville.org

March 28, 2018

MAUNDY THURSDAY

The service at 7:00 p.m. on Thursday is one of the most important services of Easter Week. It is the beginning of the one service over 4 days that culminates at Easter (called the Pascal Triduum).

We will be gathering this Thursday to remember this night. We will hear words of remembrance, we will celebrate the Eucharist. And we will wash feet. We encourage you to participate, and to make things easier for you, you can wear sandals or flipflops to church! Come, be a part of this enactment of love. Enter Easter as the disciples did.



SERVICE DATES & TIMES

Stations of the Cross, Wednesday March 28th – 6:00pm

Maundy Thursday, March 29th – 7:00pm

Good Friday, March 30th – Noon

Easter Vigil Service, Saturday March 31st – 7:30pm

Easter Sunday, April 1st – 8:00am & 10:30am

Special Newsletter to St. Luke's on BPSD School Suspension & Teacher Walkout

As you are probably aware, the teachers in Bartlesville Public School District, as well as most others throughout the state will walk out beginning on Monday April 2nd, if the Oklahoma Legislature does not pass a satisfactory solution for funding teachers' salaries and other public education needs. In support of our teachers, the Bartlesville Board of Education has directed that all schools be closed starting April 2nd for an indefinite number of days.

Preparation for a possible school suspension has been underway for several weeks by a designated community steering committee. This 25-member committee, which includes several St. Luke's members, has been working with various groups and organizations to find ways to come together to provide local support to our teachers who are not otherwise at the capitol, and to meet the needs of children and families in our community during this time. Although schools will be closed, children will continue to be fed breakfasts and lunches, and childcare options have been communicated and established.

What is St. Luke's role to play in this important show of support for our teachers and our community?

St. Luke's has offered our facilities to be the official community-wide Hospitality and Communications Center for teachers, education advocates, other volunteers and the news media. Each weekday beginning on Monday, April 2nd, we will serve as a central hub of gathering, meeting, respite and nourishment. Metcalf Hall will be the primary space involved, with some smaller rooms used for related purposes.

We need Volunteers and Food/Beverage donations very quickly to ensure that we are prepared to host such a large number of people!

Volunteer Opportunities

Teams of 3 volunteers will serve in Metcalf Hall in 3 hour shifts each day. The role is to be one of hospitality and service - with activities to include, filling up coolers with drinks, making coffee, replenishing food offerings served on the tables, and some minimal cleanup. The 3 shifts each day are 8am-11am, 11am-2pm, 2pm-5pm. Currently, we are working to schedule just the first week. If you are able to serve in any of these time windows on April 3rd, 4th, 5th, or 6th, please contact Jen Peterson as soon as possible jenrpet1971@gmail.com 918-397-7779.

Donation Opportunities

large 24 or more packs of Coke, Diet Coke, Sprite, bottled water
large bags of apples and oranges
trays of cookies/squares
trays of donuts/muffins
large boxes of small individual bags of plain Lays potato chips

If you can donate items, please contact Jen Peterson who will send out a distribution list to coordinate with everyone.

Thanks in advance to everyone for stepping up to support this important role as a Hospitality and Communications Center for our community and teachers!

ST. LUKE'S PRAYER LIST

Please keep the following persons in your prayers: Elizabeth, Jenny, Sue, Kris, Max, John, Samantha, Hugh, Raymond, Dale, Charles, Isaac, Maida, Joseph, Thelma, Tammy, Sybil, Joseph, Georgia, Diana, Mary, Jim, Millie, Bryson, Suzanne, Tracy, Ethan, Brian, Lee, Lisa, Jean, Patty, Sam, Lawrence, Carol Sue, Elaine, John, Charli, Debbie, Kim, Margery, Martha, Todd, Sydney, Ed, Evelyn and all members of our armed forces and their families.

If you have a prayer request, contact our Prayer Ministry Coordinator Thelma Blackburn 918-333-7902 or TPBGEN@aol.com or the church office at 918-336-1212 or office@episcopalbartlesville.org. (Names on the Prayer List are rotated off every 4 weeks. If there is need for continued prayers, please let us know.)



CONCERN really needs volunteers for the intake desk interacting with clients who come in for assistance. Computer skills are required, and training will be provided. The time slots that are available are Tuesday, Wednesday and Thursday from 11:00am to 2:00pm. If you can take one of those days for a period of time or for a short time,

it would be a tremendous help. Please prayerfully consider this opportunity and contact Amy Borg, St. Luke's representative to CONCERN (713-206-1179) or Kay Martin, CONCERN Executive Director (918-336-4693) if you are interested.

Kairos is a ministry

to people who are incarcerated in our state correctional institutions. **YOU** can be a part of that ministry by attending the closing ceremony for the weekend retreat coming on May 6th. This is an opportunity to see the Holy Spirit working in the hearts of these inmates...convincing them that they are worthy, and that God loves them.

Woman and men are invited to the closing. This particular retreat is in the Men's facility in Hominy (about a 40-minute drive from Bartlesville). Deadline for application is April 16. Contact Mike Watkins 918-336-1430.

SUNDAY SCHOOL SCHEDULE



There will be **NO** Sunday School or Children's Chapel on Easter Sunday.

Classes will resume their normal schedule (9:15) on Sunday, April 8. Sunday School will meet every Sunday through April and May, including May 20 (Pentecost). Please make every effort to have your child in Sunday School on a regular basis. Learning about God and their own faith tradition is so important for kids during difficult times. Being sure that they are surrounded by "a cloud of witnesses" can give them strength and assurance. Bring them and let us love them and feed them.

"The Door" has

Lots of Easter Basket
"Stuffers" available,

Pencils, Stickers, Notebook
Folders

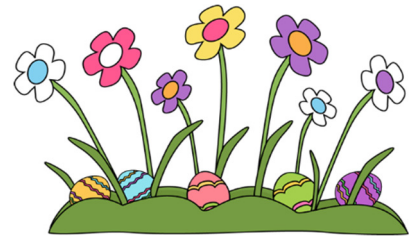
Stuffed Bunnies, Chicks, Squirrels

Kid's Earth bracelets

Kid's Band-aids

Small Tissue Packets

...and More



St. Luke's Episcopal Church
210 East 9th Street
Bartlesville, Oklahoma 74003

(Return Service Requested)
<http://www.episcopalbartlesville.org/>

The Rev. Stephen Hood, Rector fathersdhood@gmail.com 918-330-6108
The Rev. Douglas Freebern, Deacon dfreebern@gmail.com 918-914-0525
The Rev. Lauri Watkins, Deacon lwatkins@episcopalbartlesville.org 918-766-2473
The Rev. Mike Watkins, Deacon mike.watkins@sbcglobal.net 918-336-1430
In an Emergency, contact any of the clergy listed above.
Brian Elsberry, Parish Administrator (parishadmin@episcopalbartlesville.org)
Robyn Crow, Parish Secretary (office@episcopalbartlesville.org)
Dolores McCreary, Organist/Choir Director (dolores@episcopalbartlesville.org)
Kathy Zervas, Sr. Warden (kzerv@aol.com)
Dan Droege, Jr. Warden (DBDComm@aol.com)
Office Phone: 918-336-1212 Office Fax: 918-336-2557
Office Hours: Monday-Thursday, 8:30am-4:00pm, Fridays 8:30am-12:30pm
Holy Eucharist: Sunday 8am & 10:30am; Monday 5:30pm, Thursday 12pm

"The Steeple" is a weekly publication of St. Luke's Episcopal Church, 210 SE 9th St., Bartlesville, OK 74003

LAY MINISTRY SCHEDULE April 1, 2018 through April 8, 2018

Volunteers: Please make your own substitutions

Acolytes

April 1

Harold Borg, Kimaya Kindred,
Emma Boyle

April 8

Ruth Todd, Emma Perry,
Annabelle Droege

Music

April 1

The Hymnal 1982
#180 – *He is Risen!*
Psalm 118:1-2, 14-24
#204 – *Now the Green Blade
Riseth*
#178 – *Alleluia! Give Thanks to
the Risen Lord*
#2017 – *Jesus Christ is Risen
Today*

Ushers

April 1

8:00am: Dean Zervas
10:30am: Tim Simmons, Travis
Perry

April 8

8:00am: Don Davidson
10:30am: Brian Ferguson, Mark
Fregin

Greeters

April 1

8:00am: Don Davidson
10:30am: Glenn & Thelma
Blackburn

April 8

8:00am: Don Doty
10:30am: Debbie & Dennis
Mueggenborg

Layreaders

March 25

8:00am: Judy Currey, Ellen Heald
10:30am: Lauren Green, Jim
Warring

Sunday Coffee Fellowship

Hour

April 1

Rita Childers

April 8

Keeli Droege

*To volunteer see the sign-up
sheet in the Metcalf Hall kitchen
or contact Rita Childers, 918-519-
8470 or puevey45@gmail.com*

Sunday Plate Counter

April 1

Amy Borg

April 8

Bruce Ramzel

Children's Chapel

April 1

Erin Perry

April 8

Bob Tedstrom

St. Luke's Bookstore

*The Bookstore hours: Tuesday:
10-12: Sunday: 9:30-10:30 &
11:30-12:30. All proceeds from
sales go to St. Luke's Outreach
Projects.*

connie.freebern@yahoo.com

918-914-1155

Nursery Volunteers

April 1

Ruth Todd

April 8

Stefanie Tedstrom

Bereavement Committee

Team 2

Barbara Martin, Laura Birk,
Thelma Blackburn, Sally Canfield,
Rita Childers,
Debbie Mueggenborg

Agape Mission

Thursday, March 8

9-11am: Jeanne Julstrom, John
McCollum

10:45am-1pm: Kris Bonner, Rita
Childers, Becky Liehr, Kathy
Zervas,

Marcia Zervas

1:00-2:45pm: Peter Julstrom,
Miriam Petrovich

Thursday, March 22

9-11am: Jim Leibr

10:45am-1pm: Jeff Birk, Molly
Ferguson, Glenda Garrison,
Darlan Kedy, Jen Peterson

1:00-2:45pm: Carol Murphy,
Radomir Petrovich